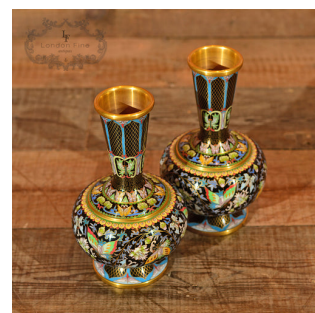
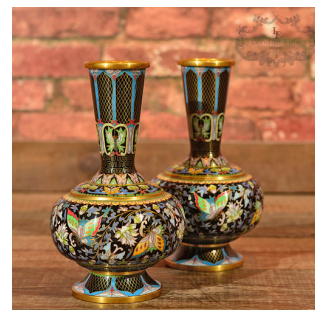


Pair of Cloisonné Vases, Art Deco Period



DESCRIPTION

Our Stock # LFA-1245 This is an antique pair of cloisonné vases dating to the early 20th century. Profusely decorated, this pair of modest brass based vases sing with a base black, lined with golden delineation and lifted by the turquoise embellishment and explosion of colour in the butterfly and floral decoration. Super little vases they stand beautifully with or without stems and are a treat from every angle.

Search [London Fine](#) for #LFA-1245 or scan the QR code for more photos and details

DIMENSIONS

Max Width: 15cm (6")
 Max Depth: 15cm (6")
 Max Height: 24cm (9.5")

