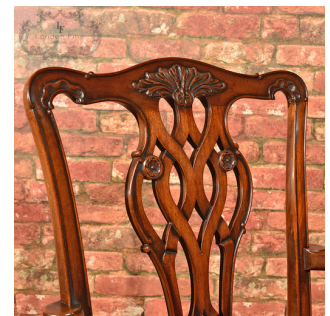


## Victorian Chippendale Revival Elbow Chair, c.1890



### DESCRIPTION

Our Stock # LFA-1285 This is a late Victorian, English, Chippendale revival armchair dating to c.1890. Raised upon swept rear and cabriole front legs with foliate carved knees tapering down into well executed claw and ball feet, this chair is constructed in solid mahogany with good colour and a beautifully aged patina. The classic 'ribbon', pierced back splat features a subtle pair of floral rosettes, sits neatly in the shoe and rises up to the serpentine crest rail that features carved detail to the sides flanking a central foliate motif. The arms are supported by swan neck risers and terminate with carved scrolls. The drop in seat is currently covered in a leather substitute but could be easily recovered to suit. Solid joints, delivered waxed, polished and ready for the home.

Search [London Fine for #LFA-1285](#) or scan the QR code for more photos and details

### DIMENSIONS

Max Width: 63cm (24.75")  
 Max Depth: 57cm (22.5")  
 Max Height: 105cm (41.25")  
 Seat Width: 51cm (20")  
 Seat Depth: 43cm (17")  
 Seat Height: 48.5cm (19")

