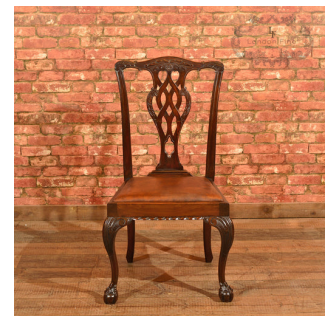




Victorian Set of 4 Chippendale Revival Dining Chairs



DESCRIPTION

Our Stock # LFA-1288 This is a set of 4 late Victorian, English, Chippendale revival dining chairs dating to c.1880. Raised upon swept rear and cabriole front legs, with foliate and scroll carved knees, tapering down into well executed talon and ball feet, the apron of the front seat rail features a gadrooned moulding. The classic 'ribbon', pierced back splats feature a subtle pair of floral rosettes, sit neatly in the shoe and rise up to the serpentine crest rail that features carved swags to the centre and ears. Constructed in solid mahogany with good colour and a beautifully aged patina, the drop in seats are well upholstered and covered in a quality tan leather. The frames benefiting from makers indicator marks beneath. Solid joints, delivered waxed, polished and ready for the home.

Search [London Fine for #LFA-1288](#) or scan the QR code for more photos and details

DIMENSIONS

Max Width: 56cm (22")
Max Depth: 51cm (20")
Max Height: 100cm (39.25")
Seat Width: 51cm (20")
Seat Depth: 38cm (15")
Seat Height: 48cm (19")

