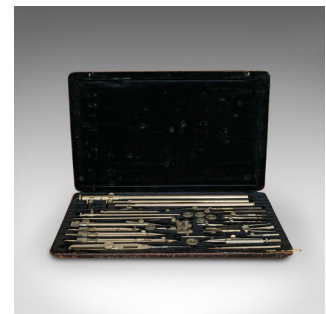


Large Vintage Draughtsman's Set, German, Architect, Technical Drawing, Riefler



DESCRIPTION

Our Stock # 18.6785

This is a large vintage draughtsman's set. A German, silver nickel architect's technical drawing set by Riefler of Germany, dating to the early 20th century, circa 1930.

- 31-piece set with a variety of instruments
- Displays a desirable aged patina
- Silver nickel instruments in good order
- Original carry case dressed in leather - showing some wear to corners commensurate with age
- Fine array of drawing tools, including a 3-piece beam compass and dotting pen
- Presented against a black velvet baize within shaped recesses
- Several pieces engraved with the Riefler maker's mark
 - Case finished with golden tooled maker's mark, reading C. Riefler, Nesselwang & München

This is a high quality and comprehensive vintage draughtsman's set, from a highly regarded German instrument maker. Delivered polished and ready for the desk or display cabinet.

DIMENSIONS

Max Width: 33cm (13")

Max Depth: 21cm (8.25")

Max Height: 3.5cm (1.5")

Find out more about Riefler here...



Search [London Fine for #18.6785](#), or scan the QR code for more photos and details

+44 (0) 207 1833 511

London Fine Ltd
 The Antique Village
 The Old Whiteways Cider Factory
 Hele, Devon, EX5 4PW

sales@londonfine.co.uk
 E. & O. E.