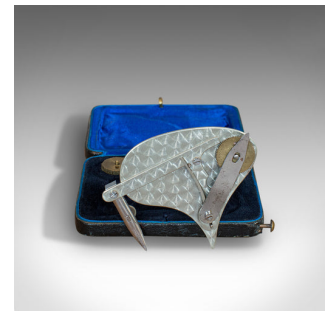


Antique Dotting Pen, German, Engine Turned, Drafting Tool, Richter, Victorian



DESCRIPTION

Our Stock # 18.6892

This is an antique dotting pen. A German, engine-turned metal drafting tool by Richter of Chemnitz, dating to the late Victorian period, circa 1900.

- Superb antique instrument for plotting graphs
- Displaying a desirable aged patina
- Arresting engine-turned finish catches the light beautifully
- Presented within a cobalt blue and black velour carry case
- Four template wheels for marking at different intervals on graphs
- Engraved with the 'RC' maker's mark for E.O. Richter, Chemnitz

This is an eye-catching, attractive antique dotting pen. Supplied by Richter of Chemnitz in Saxony, this is quality turn-of-the-century German instrument making and would enhance any desk or collection. Delivered polished and presented for display or enthusiast use.

Search [London Fine for #18.6892](#) , or scan the QR code for more photos and details

DIMENSIONS

Max Width: 8cm (3.25")

Max Depth: 6.5cm (2.5")

Max Height: 2cm (.75")

