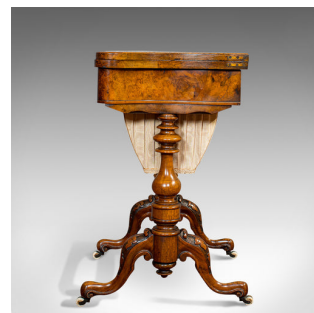
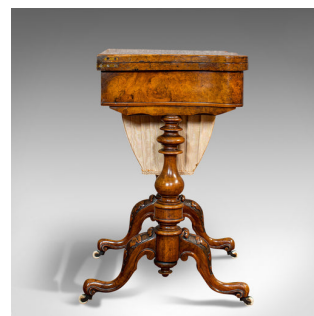
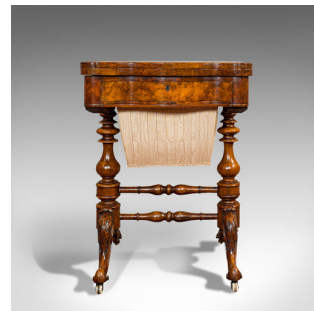


## Antique Games Table, English, Walnut, Burr, Chess, Backgammon, Victorian, C.1860



### DESCRIPTION

Our Stock # 18.6885

This is an antique games table. An English, walnut, burr walnut and maple extending Chess, Backgammon and Cribbage table, dating to the Victorian period, circa 1860.

- Exquisite example of a gaming table
- Displays a desirable aged patina
- Superb grain interest from the stocks of walnut and burr walnut
- Rich caramel hues shine through the wax polish finish
- Half-shield shaped top lovingly presented with quarter book-matched burr walnut
- Rotating through 90-degrees and folding out to reveal the games surface
- Striking Backgammon, Chess and Cribbage peg boards — enhanced with ebonised and bleached maple
- Replete with a boxed Chess set with carved wooden pieces
- Upper drawer with lined compartment and dressed with an inset brass lock — key absent
- The deep lower drawer with quality textiles and ideal for storage of gaming pieces
- Supported by elegant baluster columns and united by tapering stretchers

### DIMENSIONS

Max Width: 55cm (21.75")  
 Max Depth: 42cm (16.5")  
 Max Height: 74cm (29.25")  
 Extended Width: 85cm (33.5")  
 Extended Depth: 55cm (21.75")  
 Extended Height: 71.5cm (28.25")  
 Chess Board Size: 30cm x 30cm (11.75")



Search [London Fine for #18.6885](#), or scan the QR code for more photos and details