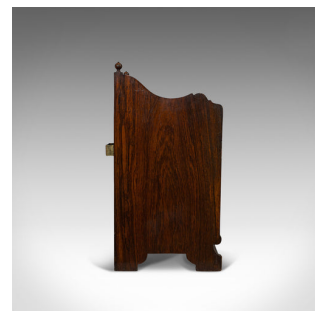


Antique Purdonium, English, Rosewood, Fireside, Cabinet, Edwardian, Circa 1910



DESCRIPTION

Our Stock # 18.6854

This is an antique purdonium. An English, rosewood fireside cabinet, dating to the Edwardian period, circa 1910.

- Unmarked, but of Gillows quality and bearing a serial number of 67856
- Displaying a desirable aged patina
- Delightful rosewood shows fine grain interest
- Rich caramel hues with lighter boxwood inlay
- Sinuously shaped upper gallery with arcading, topped by a pair of small finials
- Quarter shell inlay to top surface, bordering striking rosewood grains
- Field panel front door dressed with a drop pendant brass pull
- Exquisite marquetry with shell patera surrounded by leaf and foliate forms
- Door opens smoothly to show the generously sized coal or log bin
- Removable by way of drop handles, the bin shows desirable weathering
- Serpentine front apron meeting bracket feet to each corner

Search [London Fine for #18.6854](#) , or scan the QR code for more photos and details

DIMENSIONS

Max Width: 34cm (13.5")
 Max Depth: 31cm (12.25")
 Max Height: 59.5cm (23.5")
 Bin Width: 25cm (9.75")
 Bin Depth: 19.5cm (7.75")
 Bin Height: 27.5cm (10.75")

LIST PRICE

£1,195.00

