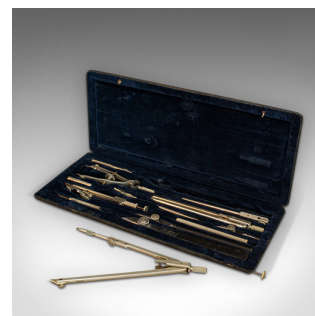


Antique Technical Drawing Set, German, Architect, Cartography, Wichmann, C.1920



DESCRIPTION

Our Stock # 18.6905

This is an antique technical drawing set. A German, architect's or cartographer's instrument case by Wichmann, dating to the early 20th century, circa 1920.

- Quality, 14-piece instrument set
- Displays a desirable aged patina
- Silver nickel tools with fine detail and light tones
- Presented within a leather textured carry case – some wear commensurate with age
- Each instrument housed within a dark navy blue velour lined compartment
- Includes a bow compass, pair of combination compasses and a ruling pen
- Case bears the Wichmann Reißzeug name and '908 S' set number to the upper corner
- Wichmann name engraved to each combination compass

This is a quality antique technical drawing set with a comprehensive 14-piece selection of precision instruments. Delivered ready for the desk or within a collection.

Search [London Fine for #18.6905](#), or scan the QR code for more photos and details

DIMENSIONS

Max Width: 28cm (11")
Max Depth: 11.5cm (4.5")
Max Height: 2.5cm (1")

LIST PRICE

£745.00

