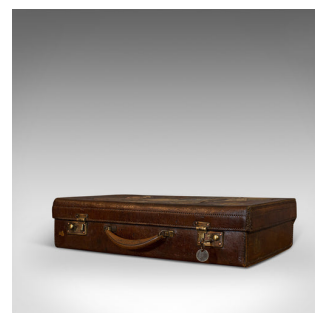
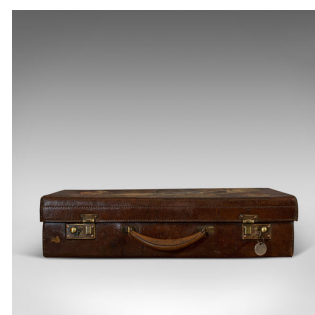


Antique Suitcase, Leather, Gentleman's Overnight Case, Travel Bag, Edwardian



DESCRIPTION

Our Stock # 18.6917

This is an antique suitcase. An English, leather gentleman's overnight case or lightweight travel bag, dating to the Edwardian period, circa 1910.

- Graced with decades of travelling tales
- Displays a desirable aged patina
- Quality leather in rich russet hues
- Broad, stitched seams adds to the durable quality
- The stout leather handle flanked by a pair of sliding brass clasps
- Inset, working locks to both – key present, with fascinating Spanish peseta coin
- Wonderfully aged travel labels for Delta Airlines and Zaragoza et al add great appeal
- Opens to reveal a vibrant dark saffron leather interior

This is a highly appealing antique suitcase, well suited to a quick overnight trip or as worldly-wise decor in a curated room. Delivered ready for display or travel.

Search [London Fine for #18.6917](#) , or scan the QR code for more photos and details

DIMENSIONS

Max Width: 46.5cm (18.25")

Max Depth: 31cm (12.25")

Max Height: 12cm (4.75")

