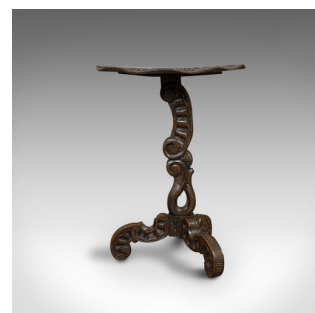
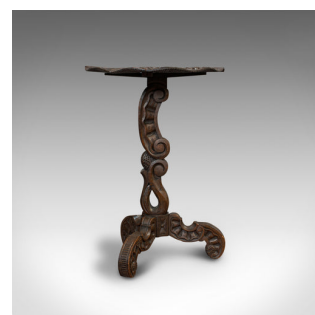


Pair Of Antique Side Tables, Asian, Elm, Occasional, Wine Stand, Victorian, 1900



DESCRIPTION

Our Stock # 18.6834

This is a pair of antique side tables. An Asian, Chinese elm carved occasional table or wine stand, dating to the late Victorian period, circa 1900.

- Superb carved tables with Oriental appeal
- Displaying a desirable aged patina
- Chinese elm shows deep russet hues and fine grain interest
- Hand-carved detail draws the eye
- Unusually shaped table edge with gently carved lily pad motif
- The top presents acanthus leaf detail
 - Supported on a scrolled column with foliate motif to centre, over a serpentine hollow below
- Squat cabriole tri-form legs with scrolled toes and decorative carvings

This is an attractive pair of antique side tables, with eye-catching hand carved detail. Well suited as wine, lamp or occasional tables and set to grace any room. Delivered waxed, polished and ready for the home.

Search [London Fine for #18.6834](#) , or scan the QR code for more photos and details

DIMENSIONS

- Max Width: 59cm (23.25")
- Max Depth: 59cm (23.25")
- Max Height: 78cm (30.75")
- Second Table Width: 60cm (23.5")
- Second Table Depth: 55cm (21.75")
- Second Table Height: 79cm (31")

