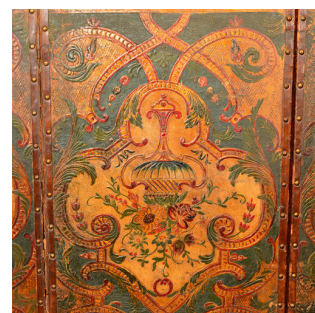
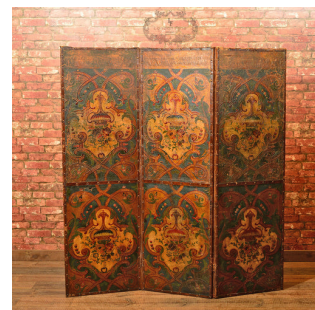


Victorian Embossed & Painted Leather Screen c.1851



DESCRIPTION

Our Stock # LFA-1300 This is an antique, Victorian, three fold, embossed leather screen dating to the time of the Great Exhibition, c.1851. Tactile and singing in a rich, deep pallet of forest greens and warm umber browns, this triple hinged panel can free stand or fold out completely flat for wall mounting – ideal for a photographer's prop, decorative wall panel or simply as a screen. The repeating pattern of an elaborate central urn with floral garniture, framed in swirls and scrolls, has an Anglo-Indian feel in tone and presentation. The leather trimmed with a plain border fastened with brass studs. The reverse is plain finished in black. A delightful piece of immense interest delivered ready for use.

Search [London Fine for #LFA-1300](#) or scan the QR code for more photos and details

DIMENSIONS

Max Width: 153cm (60")
 Max Height: 163cm (64.25") Each Panel
 Width: 51cm (20")
 Height: 163cm (64.25")

