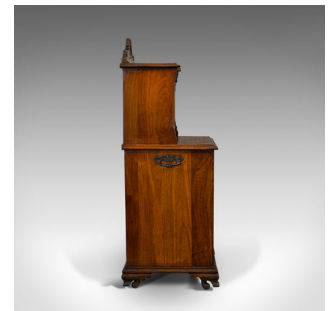


## Antique Purdonium, English, Walnut, Fireside Bin, Cabinet, Victorian, Circa 1890



### DESCRIPTION

Our Stock # 18.6824

This is an antique purdonium. An English, walnut fireside bin with unusual upper cabinet, dating to the late Victorian period, circa 1890.

- Superb antique cabinet for the grand fireplace
- Displays a desirable aged patina
- Select walnut shows fine grain interest
- Quality caramel hues presented beneath a wax polish finish
- Carved upstand with ornate scroll motif and quality scallop shell to the centre
- Arranged as a smaller cabinet over a traditional purdonium coal bin
- Both dressed with shaped iron handles with broad leaf detail
- Field panels with cockbeading add a dashing touch
- Pair of shaped handles to each side with scrolled backplates
- The removable bin suitable for logs, kindling and coal
- Standing upon shaped ogee bracket feet, with inset castors for ease of movement

Search [London Fine for #18.6824](#) , or scan the QR code for more photos and details

### DIMENSIONS

Max Width: 41cm (16.25")  
 Max Depth: 38cm (15")  
 Max Height: 101cm (39.75")  
 Coal Bin Width: 28.5cm (11.25")  
 Coal Bin Depth: 20cm (7.75")  
 Coal Bin Height: 29cm (11.5")

