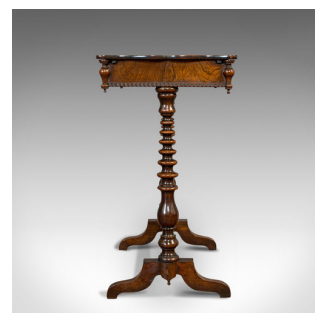


Antique Collector's Table, Walnut, Rosewood, Craft, Hobby Stand, Victorian, 1900



DESCRIPTION

Our Stock # 18.6944

This is an antique collector's table. An English, walnut and rosewood sliding craft or hobby stand, dating to the late Victorian period, circa 1900.

- Exquisite table with arresting grain interest
- Displays a desirable aged patina
- Bookmatched walnut top, of the highest quality
- Rosewood frame and legs show fine grain interest
- Rich, deep russet hues beneath the wax polish finish
- Serpentine sliding top opens to reveal saffron yellow interior
- Arranged with 6 compartments and 3 storage trays
- Each lid dressed with small wooden pulls and inlaid with mother of pearl
- Front fascia replete with working, inset lock, presented within a carved scroll detail
- Key present, in delightful Gothic revival taste
- Uprturned baluster corbels to each shoulder, with small drop pendant finials beneath

Search [London Fine for #18.6944](#) , or scan the QR code for more photos and details

DIMENSIONS

Max Width: 56.5cm (22.25")
 Max Depth: 41.5cm (16.25")
 Max Height: 75.5cm (29.75")
 Open Width: 91cm (35.75")

