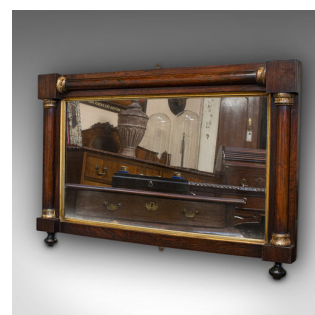
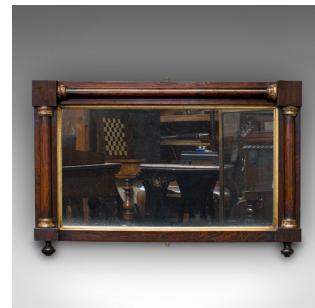


Antique Overmantel Mirror, English, Rosewood, Glass, Rectangular, Regency, 1820



DESCRIPTION

Our Stock # 18.6822

This is an antique overmantel mirror. An English, Rosewood and glass rectangular mirror, dating to the Regency period, circa 1820.

- Generously sized and pleasingly foxed
- Displaying a desirable aged patina
- Rosewood shows fine grain interest and rich russet hues
- Original, silvered mercury mirror plate with desirable light foxing
- Square section corners unite demi-lune columns with gilt gesso decorated capitols
- Mirror bevel finished in bright golden tones, framing the plate with its bright, clear reflection
- Two drop pendent finials adorn the lower corners
- Pair of small brass hanging loops for wall mounting

This is an attractive and desirably foxed antique overmantel mirror. With grand Regency appeal, select Rosewood and the original mirror plate, this is a desirable piece sure to enhance any wall. Delivered polished and ready for the wall.

Search [London Fine for #18.6822](#) , or scan the QR code for more photos and details

DIMENSIONS

- Max Width: 85.5cm (33.75")
- Max Depth: 5.5cm (2.25")
- Max Height: 56cm (22")
- Mirror Plate Width: 68cm (26.75")
- Mirror Plate Height: 37.5cm (14.75")

