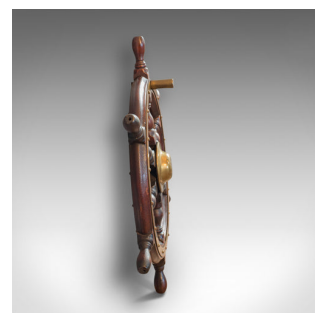
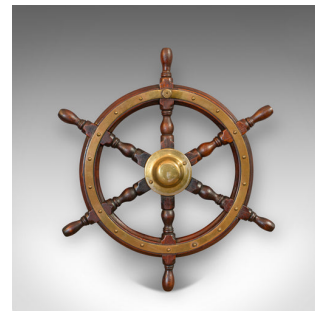


## Vintage Ship's Wheel, English, Oak, Brass, Decorative, Maritime, Display, 1950

**DESCRIPTION**

Our Stock # 18.6881

This is a vintage ship's wheel. An English, oak and brass decorative maritime display piece, dating to the mid 20th century, circa 1950.

- Appealing maritime wheel
- Displays a desirable aged patina
- Solid oak shows fine grain interest and pleasingly heavy at 3.06kg (6.74lb)
- Rich hues and tones throughout
- Six turned spokes terminating in gently shaped handles
- King spoke decorated with a tiller handle
- Brass plate to the facing felloe adds an appealing contrast
- Further brass to be found on the centre boss

This is an attractive vintage ship's wheel with high interest for the nautical collector or suitable decor for a seaside dwelling. Delivered waxed, polished and ready for the wall or collection.

Search [London Fine for #18.6881](#) , or scan the QR code for more photos and details

**DIMENSIONS**

Max Width: 52cm (20.5")

Max Depth: 9cm (3.5")

Max Height: 59.5cm (23.5")

