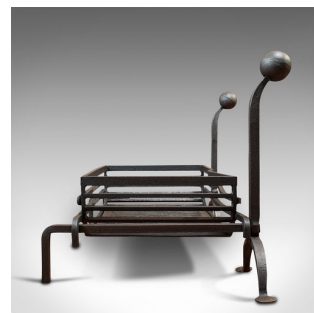
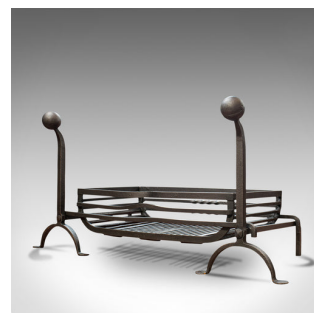


Large Antique Fireplace, English, Wrought Iron, Fire Basket, Andirons, Victorian



DESCRIPTION

Our Stock # 18.6955

This is a large antique fireplace. An English, wrought and cast iron fire basket with andirons, dating to the late Victorian period, circa 1900.

- Impressively sized fireplace set
- Displaying a desirable aged patina
- Wide fire basket with graphite finish throughout
- Cast iron fire dogs sharing the same consistent finish
- The fire basket with gently upturned ends, complementing the arched andiron legs
- Serpentine reverse bow front a distinctive touch
- The rear with a pair of barley twist forms
- Lift-out grates to the base, pleasingly heavy
- Pair of slender fire dogs topped with large ball heads
- Raised on arched legs to front with flat, circular feet
- Long rear arm terminates in a square toe

Search [London Fine for #18.6955](#) , or scan the QR code for more photos and details

DIMENSIONS

Max Width: 122cm (48")
 Max Depth: 66.5cm (26.25")
 Max Height: 60cm (23.5")
 Basket Width: 93cm (36.5")
 Basket Depth: 44cm (17.25")
 Basket Height: 19cm (7.5")
 Andirons Width: 34cm (13.5")
 Andirons Depth: 66.5cm (26.25")
 Andirons Height: 60cm (23.5")

