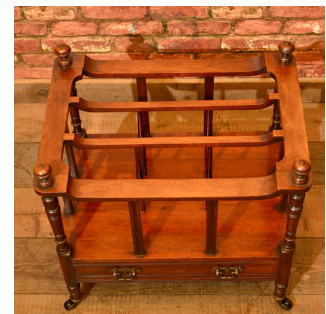




## Victorian Mahogany Canterbury, c.1850



### DESCRIPTION

Our Stock # LFA-1320 This is an antique, Victorian canterbury dating to the mid 19th century, c.1850. A superior quality piece made in fine mahogany with good colour and a fine aged patina, this piece is raised on turned legs and the original ceramic castors. The boat shaped top, offering three divisions, rides upon tapering turned supports to the corners topped with finials and is internally divided by 'cigar' shaped columns with outer support from laths. Mahogany lined with dovetail joints, the single frieze drawer is subtly decorated with moulding detail and is dressed with the original brass handles. A fine example, delivered waxed, polished and ready for the home.

Search [London Fine](#) for #LFA-1320 or scan the QR code for more photos and details

### DIMENSIONS

Max Width: 56cm (22")  
Max Depth: 40.5cm (16")  
Max Height: 54cm (21.25")

