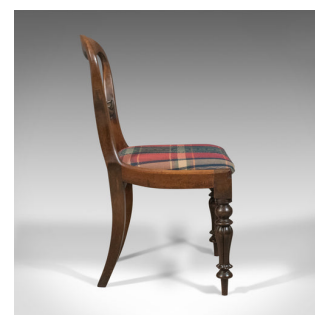




Antique Dining Chair, English, Buckle Back, Mahogany Circa 1835



DESCRIPTION

AAU-3495

This is an antique dining chair, English William IV buckle back in mahogany, circa 1835.

- Warm hues to the dark, polished mahogany finish
- Comfortable, traditionally stuffed pegged, drop-in seat pads
- Finished in a tartan cloth yet easily recovered to suit any décor
- Dished buckle back feature a swagged crest rail
- Stiles pinched at the waist with carved lower rail
- Displaying well executed, carved 'C' scrolls mounting central banded feathers
- Turned and tapered, bell flower front legs
- Featuring ball knees and tapered feet
- Moulding detail to the front seat rail

A good example of a period dining chair. Solid joints and construction, delivered waxed, polished and ready for the home.

Search [London Fine for #AAU-3495](#) or scan the QR code for more photos and details

DIMENSIONS

Max Width: 51cm (20")
Max Depth: 51cm (20")
Max Height: 86cm (33.75")
Seat Width: 41cm (16.25")
Seat Depth: 38.25cm (15")
Seat Height: 46cm (18")

