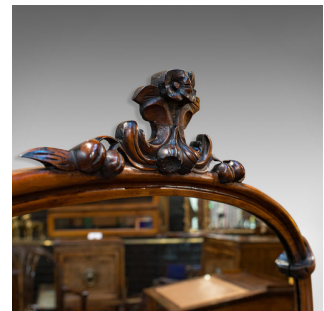
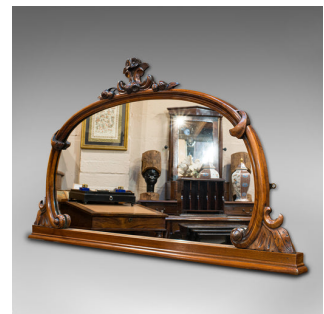


Antique Overmantel Mirror, English, Walnut, Glass, Hall, Victorian, Circa 1860



DESCRIPTION

Our Stock # 18.6979

This is an antique overmantel mirror. An English, walnut and glass hall mirror, dating to the Victorian period, circa 1860 and later.

- Pleasingly ornate and of generous size
- Displays a desirable aged patina
- Walnut frame shows fine grain interest and rich caramel hues
- Later mirror plate in superb order
- Carved surmount standing over the whole with foliate and berry motif
- Scrolled vines decorate the mirror frame
- Substantial buttress carvings to each end with further decorative leaves and scrolled detail

- The wide mirror offers bright, clear viewing with pin sharp reflective quality
- Small brass loops to rear for wall mounting

This is an attractive antique overmantel mirror, with fine walnut frame and a superb glass plate. The generous size offers itself to a large reception hallway or within a grand bedroom. Delivered waxed, polished and ready for the wall.

DIMENSIONS

Max Width: 118cm (46.5")

Max Depth: 6.5cm (2.5")

Max Height: 64cm (25.25")

Mirror Plate Width: 89cm (35")

Mirror Plate Height: 44cm (17.25")



Search [London Fine](#) for #18.6979, or scan the QR code for more photos and details

+44 (0) 207 1833 511

London Fine Ltd
 The Antique Village
 The Old Whiteways Cider Factory
 Hele, Devon, EX5 4PW

sales@londonfine.co.uk
 E. & O. E.