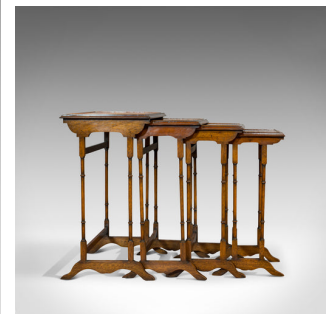


Antique Quartetto of Tables, English, Walnut, Mahogany, Nest, Edwardian, C.1910



DESCRIPTION

Our Stock # 18.6978

This is an antique quartetto of tables. An English, walnut over mahogany set of nest tables, dating to the Edwardian period, circa 1910.

- Of quality craftsmanship, strongly jointed and robust
- Displaying a desirable aged patina
- Superb walnut with fine grain interest
- Rich, deep caramel hues
- Each of the galleried table tops are decorated with an inlay of book-matched walnut
- Raised upon pairs of mahogany turned column supports united by stretchers to the rear
- Stood upon arched trestle feet with serpentine carved appearance
- Nesting perfectly or cascading to provide interest in a room

This is an attractive antique quartetto of tables, with striking grain interest. Solid joints and construction, delivered waxed, polished and ready to be enjoyed.

Search [London Fine for #18.6978](#) , or scan the QR code for more photos and details

DIMENSIONS

- Max Width: 50.5cm (20")
- Max Depth: 35cm (13.75")
- Max Height: 65.5cm (25.75")
- Table 2 Width: 42.5cm (16.75")
- Table 2 Depth: 32cm (12.5")
- Table 2 Height: 63cm (24.75")
- Table 3 Width: 35cm (13.75")
- Table 3 Depth: 30cm (11.75")
- Table 3 Height: 61cm (24")
- Table 4 Width: 28.5cm (11.25")
- Table 4 Depth: 27.5cm (10.75")
- Table 4 Height: 59.5cm (23.5")

