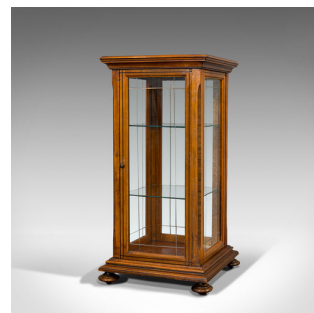


Antique Shop Display Cabinet, English, Oak, Walnut, Showcase, Edwardian, C.1910



DESCRIPTION

Our Stock # 18.6981

This is an antique shop display cabinet. An English, oak and walnut showcase, dating to the Edwardian period, circa 1910.

- Beautifully glazed cabinet
- Displays a desirable aged patina
- Oak shows fine grain interest and pleasing caramel hues
- Quartered walnut inlay used to striking effect, decorating the counter top
- Fully glazed to each side with clear, bright glass
- Cut glass plates provide further interest
- Opening door to front dressed with small foliate pull in brass
- Inlaid, canted corners in contrasting dark hues
- Arranged with a pair of glass shelves to the interior
- Supported by brass roundels to each corner
- Presented upon a tiered, continuous plinth base

Search [London Fine for #18.6981](#) , or scan the QR code for more photos and details

DIMENSIONS

Max Width: 46cm (18")

Max Depth: 46cm (18")

Max Height: 95.5cm (37.5")

