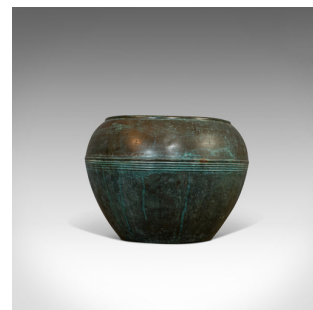


Antique Planter, English, Copper, Pot, Jardiniere, Henry Loveridge, Circa 1900



**DESCRIPTION**

Our Stock # 18.6984

This is an antique planter. An English, copper pot or jardiniere by Henry Loveridge & Co, dating to the late 19th century, circa 1900.

- Wonderfully patinated with attractive colouration
- Displaying a desirable aged patina
- Copper in good, weathered order with verde gris in abundance
- Generous size and fascinating form
- Pleasingly shaped with decorative band to the circumference
- Rolled opening with a diameter of 24cm (9.5")
- Pair of drain holes to base, making it ideal as a planter
  - Circular trade mark appears on the underside of Henry Loveridge & Co, Wolverhampton

This is a charming antique planter, set to bring great colour and patination to an orangery or ornamental garden. Delivered polished and ready to display.

Search [London Fine for #18.6984](#) , or scan the QR code for more photos and details

**DIMENSIONS**

Max Width: 32cm (12.5")

Max Depth: 32cm (12.5")

Max Height: 25.5cm (10")

Opening Diameter: 24cm (9.5")

Find out more about Henry Loveridge & Co here...

