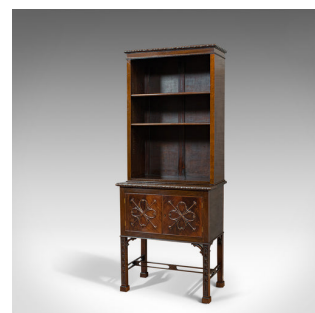


Compact Antique Open Bookcase, Mahogany, Sideboard, Dresser, Edwardian, C.1910



**DESCRIPTION**

Our Stock # 18.6982

This is a compact antique open bookcase. An English, mahogany sideboard or dresser in the manner of Chinese Chippendale, dating to the Edwardian period, circa 1910.

- Unusually diminutive stature endears itself
- Displaying a desirable aged patina
- Mahogany shows fine grain interest
- The wax polish finish enhancing the rich caramel hues
- Arranged as an open bookcase over a pot cupboard base
- Carved crown moulding stands above the whole with foliate motif
- The pattern continued along the sideboard edge
- Pair of shelves offer height adjustment
- Fascinating bentwood mouldings adorn both cabinet doors
- The right hand door dressed with an inset lock – key absent
- Supported by square section legs, enhanced with carved floral patterns and pierced brackets

Search [London Fine for #18.6982](#) , or scan the QR code for more photos and details

**DIMENSIONS**

- Max Width: 61cm (24")
- Max Depth: 38cm (15")
- Max Height: 152cm (59.75")
- Shelf Size Width: 52cm (20.5")
- Shelf Size Depth: 24cm (9.5")

