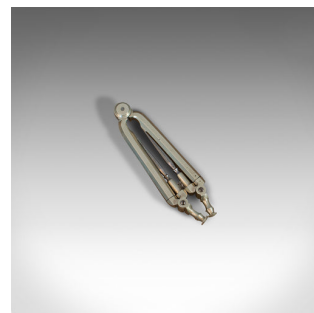
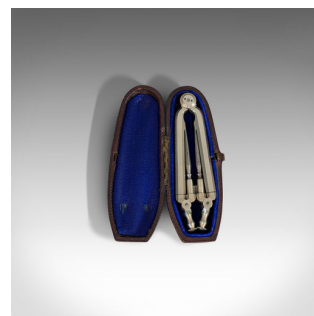
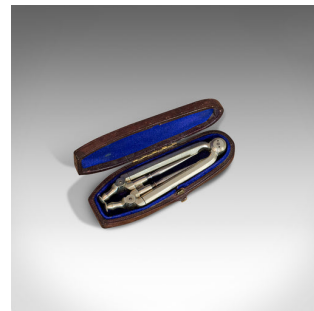


Antique Folding Pocket Compass, Pillar Divider, Drawing Instrument, Victorian



DESCRIPTION

Our Stock # 18.6894

This is an antique folding pocket compass. An English, Electrum alloy pillar-type divider drawing instrument, dating to the late Victorian period, circa 1900.

- Wonderful pocket compass in coffin case
- Displays a desirable aged patina
- Realised in Electrum with fine detail and exuding quality
- Charming case lined with blue silk to the lid interior and velvet
- Folding outwards with a 5-leaf hinge mechanism

This is a charming antique folding compass, ideal for slipping into a draughtsman's coat pocket or gracing the office desk. Delivered polished and ready to be enjoyed.

Search [London Fine for #18.6894](#), or scan the QR code for more photos and details

DIMENSIONS

Max Width: 10.5cm (4.25")

Max Depth: 4cm (1.5")

Max Height: 2.5cm (1")

