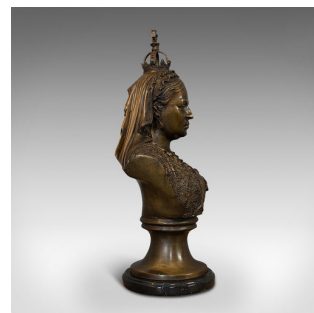
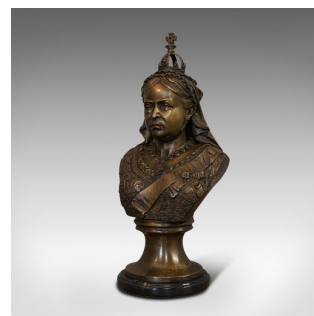
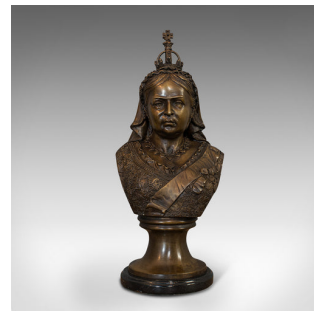


Vintage Bust, Queen Victoria, English, Bronze, Royal Portrait, Monarch, Empress



DESCRIPTION

Our Stock # 18.7010

This is a vintage bust of Queen Victoria. An English, bronze, decorative Royal portrait of the long-serving monarch and Empress of India, dating to the 20th century.

- An enduring icon of the British monarchy
- Displays a desirable aged patina
- Bronze shows fascinating weathering and colour
- Pleasingly heavy weight of 4kg (8.8lb)
- After Robinson & Leadbetter's 1897 parian ware celebrating Victoria's 60th year as Queen
- Working in bronze offering fine detail to the crown and ceremonial dress
- Capturing Victoria's quintessential and iconic dour demeanour
- Foliate dress detail includes a pair of cameo brooches
- Raised upon a tapering socle and presented upon a black marble plinth

This is a fascinating vintage bust of Queen Victoria, whose reign from 1837-1901 is as iconic as any British monarch's. Capturing her signature look of 'we are not amused' this bust offers fine detail, superbly weathered bronze and decorative appeal. Delivered polished and ready for display

DIMENSIONS

Max Width: 17.5cm (7")
 Max Depth: 14cm (5.5")
 Max Height: 40.5cm (16")



Search London Fine for #18.7010, or scan the QR code for more photos and details.
 +44 (0) 207 1855 511

London Fine Ltd
 The Antique Village
 The Old Whiteways Cider Factory
 Hele, Devon, EX5 4PW

sales@londonfine.co.uk
 E. & O. E.