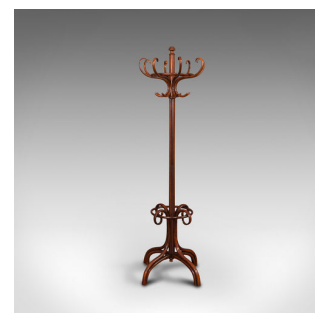
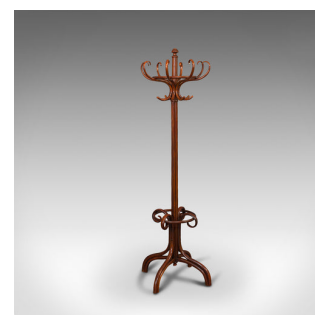


## Antique Hallway Coat Stand, English, Bentwood, Hall, Stick, Edwardian, C.1910



### DESCRIPTION

Our Stock # 18.7027

This is an antique hallway coat stand in the manner of Thonet. An English, bentwood hall stick stand, dating to the Edwardian period, circa 1910.

- Elegantly curvaceous form
- Displays a desirable aged patina
- Bentwood radiates rich caramel hues beneath the wax polish finish
- Offers fine grain interest and superb craftsmanship
- Small beehive finial stands above the whole
- An octet of sinuous arms with serpentine hooks beneath
- Stick loop to the mid point offers a repeat of the scrolled motif
- Raised upon four wide legs with internal stretcher supports with central pendant finial

finial

This is a superb antique hallway coat stand, with wonderful bentwood shape and form. Of generous proportion and appealing colour, this stand will enhance any entrance hall. Solid joints and construction, delivered waxed, polished and ready for the home.

Search [London Fine for #18.7027](#) , or scan the QR code for more photos and details

### DIMENSIONS

Max Width: 54.5cm (21.5")

Max Depth: 54.5cm (21.5")

Max Height: 201cm (79.25")

