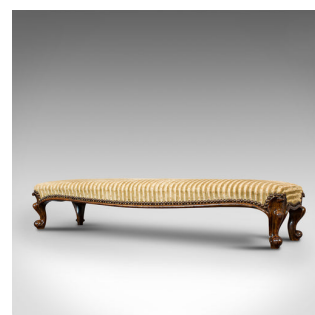


Long Antique Foot Stool, English, Coaching, Fireside, Early Victorian, C.1840

**DESCRIPTION**

Our Stock # 18.7023

This is an antique foot stool. An English, mahogany coaching or fireside stool, dating to the early Victorian period, circa 1840.

- Superb stool with low, wide profile
- Displays a desirable aged patina
- Mahogany frame shows fine grain interest and carved detail
- Quality fabric upholstery in good order - one small mark on closer inspection
- Traditionally stuffed cushion a comfortable perch for weary feet
- Pinstriped upholstery in cream over ivy green with an amber knot motif
- Press stud finish borders the frame to each side
- Raised upon wonderfully carved cabriole legs with a sinuous shaped apron above

This is a charming antique foot stool, ideal for resting ones legs beside a lovely warm fireplace. Solid joints and construction, delivered waxed, polished and ready for the home.

Search [London Fine for #18.7023](#) , or scan the QR code for more photos and details

DIMENSIONS

Max Width: 95cm (37.5")

Max Depth: 28cm (11")

Max Height: 19.5cm (7.75")

