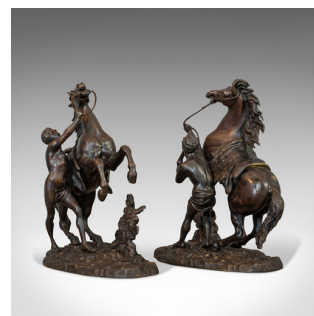
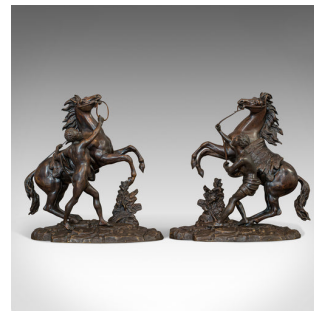


## Antique, Pair, Marly Horses, French, Bronze, Equestrian, Statue, After Coustou



### DESCRIPTION

Our Stock # 18.7008

This is an antique pair of Marly horses. A French, bronze equestrian statue after Guillaume Coustou (1677-1746), dating to the late 19th century, circa 1900.

- Beguiling representations of the famous Marly marble horses - now in the Louvre
- Each displays a desirable aged patina
- Pleasingly heavy bronze in very good order
- Weighing 6.95kg and 6.94kg respectively (15.3lb each)
- Two horses rear up as their grooms struggle to contain their power
- Superb craftsmanship captures the majesty of each horse
- Defined, muscular haunches give a fine sense of motion
- Further detailed with flowing mane and serpentine tail
- A look of surprise and fear captured on the groom's faces
- Delicate leather reigns the only means of asserting control
  - Their athletic form depicts primitive nature - a break from the mythological

references of the time

Search [London Fine for #18.7008](#) , or scan the QR code for more photos and details

### DIMENSIONS

Horse 1 Width: 33cm (13")  
 Horse 1 Depth: 15.5cm (6")  
 Horse 1 Height: 33.5cm (13.25")  
 Horse 2 Width: 31cm (12.25")  
 Horse 2 Depth: 13.5cm (5.25")  
 Horse 2 Height: 33cm (13")

