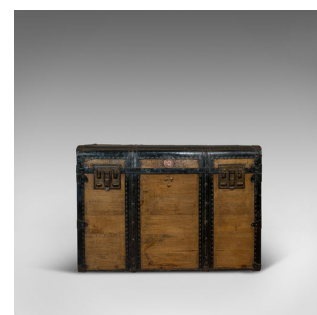




## Large Antique Trunk, English, Pine, Carriage Chest, Steamer, Victorian, C.1900



### DESCRIPTION

Our Stock # 18.7035

This is a large antique trunk. An English, pine carriage chest or steamer trunk, dating to the late Victorian period, circa 1900.

- Of useful proportion and charming finish
- Displays a desirable aged patina
- Pine shows fine grain interest and rich caramel hues beneath the wax polish finish
- Iron and leather bound for lasting strength
- Dressed with large iron clasps to each side of the front fascia
- Decorative German copper plate to lid edge
- Wide leather carriage straps to each side with shaped iron keepers
- Stout lid opens upon rear hinges with bracket hinge to the right
- The interior finished with a foliate lining of cream and green hues
- The base lined with a map of Launceston District in Cornwall, dating to 1906

Search [London Fine for #18.7035](#), or scan the QR code for more photos and details

### DIMENSIONS

Max Width: 97.5cm (38.5")

Max Depth: 60cm (23.5")

Max Height: 67.5cm (26.5")

