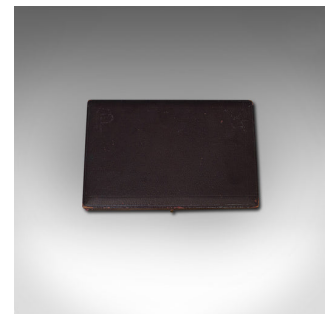


## Antique Cartographer's Set, English, Architect, Draughtsman, AG Thornton, C.1920



### DESCRIPTION

Our Stock # 18.6908

This is an antique cartographer's set. An English, silver nickel architect's or draughtsman's case by A.G. Thornton of Manchester, dating to the early 20th century, circa 1920.

- Fascinating early 20th century instrument case
- Displaying a desirable aged patina
- Silver nickel tools in very good order
- Presented within a dark brown carry case
- Comprising 12 pieces with accessory pointers and extending beam
- Pair of large compass dividers and three bow compass
- The pair of ruling pens engraved with the Thornton maker's mark
- Navy blue interior with gold tooled Thornton crest for the Paragon Works site

This is a superb antique cartographer's set with a comprehensive selection of tools for the architect or hobbyist. Delivered polished and ready to grace a desk top.

Search [London Fine for #18.6908](#) , or scan the QR code for more photos and details

### DIMENSIONS

Max Width: 21.5cm (8.5")  
Max Depth: 14.5cm (5.75")  
Max Height: 2.5cm (1")

