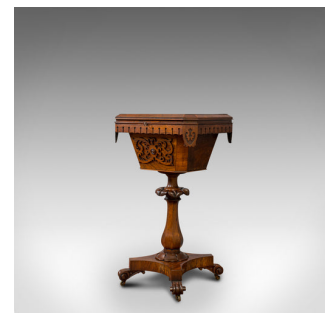


Antique Lady's Work Box, English, Rosewood, Sewing, Table, Regency, Circa 1820



DESCRIPTION

Our Stock # 18.7025

This is a quality antique lady's work box. An English, Rosewood sewing or haberdashery table, dating to the Regency period, circa 1820.

- A table of elegant Regency craftsmanship
- Displays a desirable aged patina
- Select Rosewood a delight of fine grain interest
- Rich caramel hues beneath the wax polish finish
- The tiered lid edge with canted corners opens upon internal brass hinges
- Beneath, a pierced apron with delicately carved circular pattern
- Adorning the canted corners are four decorative panels with foliate carvings
- Attractive fretwork motif to the front fascia with elaborate scrolled foliage
- An inset, working lock holding the lid securely – key present
- The dressed interior a shock of scarlet hues with a suite of compartments
- Large central cover reveals the deep compartment within the up-stand

Search [London Fine for #18.7025](#) , or scan the QR code for more photos and details

DIMENSIONS

Max Width: 44cm (17.25")

Max Depth: 36.5cm (14.25")

Max Height: 75cm (29.5")

