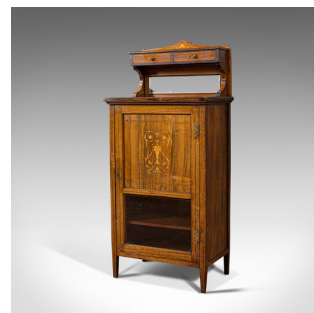
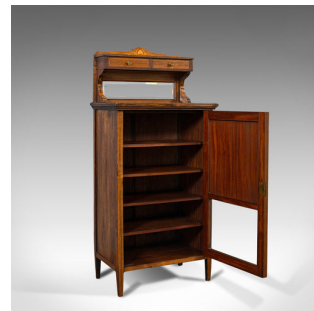


Antique Music Cabinet, English, Rosewood, Side, Hall Stand, Edwardian, C.1910



DESCRIPTION

Our Stock # 18.7026

This is an antique music cabinet. An English, Rosewood side or hall stand, dating to the Edwardian period, circa 1910.

- Classic Chiffonier form presenting a mirror back under a raised display shelf
- Displaying a desirable aged patina
- Attractive rosewood showing depth of tone, fine grain interest and rich colour
- Desirable light foxing to the mirror and clear, bright plate glass to door
- Up-stand at crown showing feature bevelled mirror plate and shaped bracket riser supports
- Low in profile, the up-stand decorated with boxwood shell motif and ornate stringing
- Pair of drawers feature boxwood stringing and small, circular brass pulls
- Inlay to the top surface centres upon a pedestal urn with floral scrolls cascading outwards
- Generous in size offering practical storage with a five section interior
- The interior accessed by a glazed panel door, opening upon ornate brass butterfly hinges
- A foliate garland inlay decorates the upper field panel

DIMENSIONS

Max Width: 57cm (22.5")
 Max Depth: 36.5cm (14.25")
 Max Height: 124.5cm (49")
 Display Platform Height: 94.5cm (37.25")



Search London Fine for #18.7026, or scan the QR code for more photos and details.

+44 (0) 207 1855 511

London Fine Ltd
 The Antique Village
 The Old Whiteways Cider Factory
 Hele, Devon, EX5 4PW

sales@londonfine.co.uk
 E. & O. E.