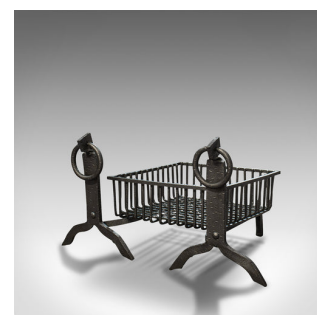


Antique Fireplace Set, English, Cast Iron, Fire Basket, Andirons, Victorian



DESCRIPTION

Our Stock # 18.7036

This is an antique fireplace set. An English, cast iron fire basket and pair of andirons, dating to the late Victorian period, circa 1900.

- Victorian fireside appeal
- Displaying a desirable aged patina
- Cast iron in good order with some historical ageing to the basket
- Good consistent graphite finish throughout
- Medieval overtones to the whole creates an appealing visage
- The fire basket itself ideal for all fuel types
- Attractive fire dogs with heavy ring handles and finished with a delightful naive chipping
- Raised upon a pair of splayed feet to the front, with a long rear rest

This is a fascinating antique fireplace set, with good quality iron and appealing aesthetic. Sure to enhance any small hearth, this Victorian basket and stands offers practical use with a variety of fuels. Delivered polished and ready for the fireside.

Search [London Fine for #18.7036](#), or scan the QR code for more photos and details

DIMENSIONS

- Max Width: 86cm (33.75")
- Max Depth: 56cm (22")
- Max Height: 43.5cm (17.25")
- Basket Width: 47cm (18.5")
- Basket Depth: 48cm (19")
- Basket Height: 16cm (6.25")
- Firedogs Width: 36cm (14.25")
- Firedogs Depth: 56cm (22")
- Firedogs Height: 43.5cm (17.25")

