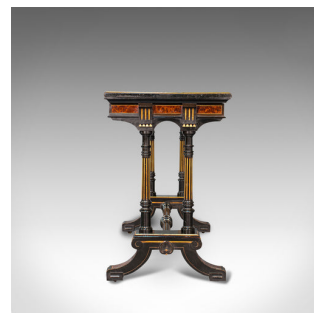


Antique Card Table, Ebonised, Games, Gillow & Co, Aesthetic Period, Circa 1875



DESCRIPTION

Our Stock # 18.7028

This is an antique gentleman's card table. A superior example of an English, ebonised and gilt gaming table by Gillow & Co of Lancaster, presented in wonderful condition, dating to the Aesthetic period, circa 1875.

- Highly covetable example of Gillow's late Victorian excellence
- Displaying a desirable aged patina
- Lustrous ebonised mahogany with deep wax polish finish
- North African thuya inlay and gilt flourishes contrast wonderfully against the black stocks
- Wide tabletop with gently tiered edge rotates through 90 degrees, revealing the striking interior
- Emerald green baize folding out upon a pair of ornate brass hinges with scrolled decoration
- The quality baize with Greek key impression - some small openings along the seam
- Square front apron with inlaid burr walnut, bordered by gilt tooling
- The Gillow & Co maker's mark above the apron with serial number 3271, dating the piece to 1875
- Arcaded capitals uniting the quartet of turned supports, a sight to behold with gilt fluting

445(0) 207 1831 511

Search [London Fine](#) for #18.7028, or scan the QR code for more photos and details

DIMENSIONS

Max Width: 90.5cm (35.75")

Max Depth: 47cm (18.5")

Max Height: 75.5cm (29.75")

Extended Width: 93.5cm (36.75")

Extended Depth: 90.5cm (35.75")

Extended Height: 73cm (28.75")

Kneehole Height: 65cm (25.5")

Find out more about Gillows of Lancaster here...



London Fine Ltd

The Antique Village
The Old Whiteways Cider Factory
Hele, Devon, EX5 4PW

sales@londonfine.co.uk

E. & O. E.