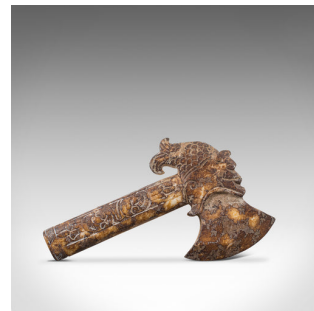


Antique Ceremonial Axe, Chinese, Jade, Decorative Tool, Shang Dynasty Taste



DESCRIPTION

Our Stock # 18.7056

This is an antique ceremonial axe. A Chinese, mottled caramel jade decorative tool redolent of the Shang Dynasty, dating to the mid-19th century, circa 1850.

- Striking colouration catches the eye
- Displays a desirable aged patina
- Heavily mottled caramel jade in very good order
- Hand-carved decorations abound
- Revivalist inspiration from the decorative style of the Shang Dynasty (circa 1556 to 1046 BC)
 - The axe crafted in the form of a wonderfully caricature dragon carp's head
 - Chamfered blade edge affords safe handling and appreciation
 - Copious carved details decorate the handle

This is a fascinating antique ceremonial axe, with superb jade figuring and pleasing hand-carved details. Sure to delight, delivered polished and ready to display and hold.

Search [London Fine for #18.7056](#) , or scan the QR code for more photos and details

DIMENSIONS

Max Width: 12.5cm (5")
 Max Depth: 2.5cm (1")
 Max Height: 20cm (7.75")

LIST PRICE

£845.00

