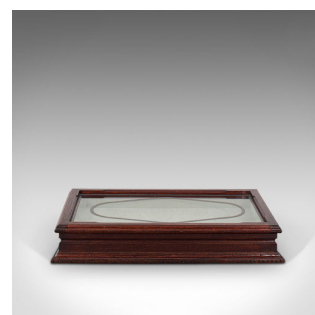


Antique Jeweller's Display Case, English, Mahogany, Shopfitting, Cabinet, 1910



DESCRIPTION

Our Stock # 18.7074

This is an antique jeweller's counter top display case. An English, mahogany and leaded glass shopfitting or display cabinet, dating to the Edwardian period, circa 1910.

- Superb sloping form and display appeal
- Displaying a desirable aged patina - in very good order throughout
- Select mahogany shows fine grain interest and rich russet hues
- Leaded plate glass with inset lead diamond motif
- Lid with wide brass hinge opens smoothly and rests naturally
- Mellow ivy green in colour, the high quality velour lining presents beautifully
- Broad tapered plinth base offers a dentil moulding to its lower edge
- The base lined with a repeat of the green velour to cushion upon a counter top

This is a superb antique jeweller's display cabinet, offering quality Edwardian craftsmanship for a collection of small items or within a retail space. Solid joints and construction, delivered waxed, polished and ready to serve as a showcase.

Search [London Fine for #18.7074](#), or scan the QR code for more photos and details

DIMENSIONS

/strong>:

Max Width: 67cm (26.5")
Max Depth: 39cm (15.25")
Max Height: 16.5cm (6.5")
Display Space Width: 59cm (23.25")
Display Space Depth: 31.5cm (12.5")
Display Space Height: 6cm (2.25")

