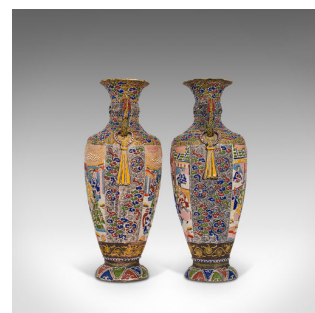
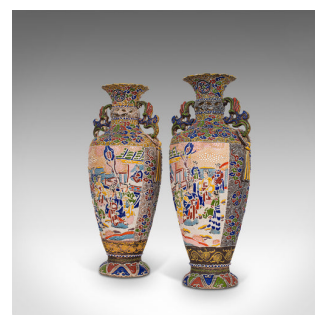
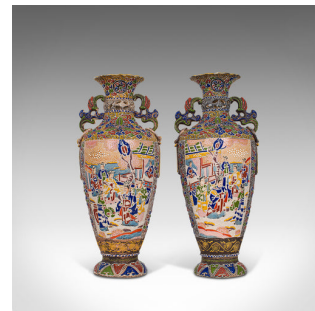


Pair Of Tall Antique Satsuma Vases, Japanese, Ceramic, Decorative, Moriage, 1900



**DESCRIPTION**

Our Stock # 18.7061

This is a pair of tall antique satsuma vases. A Japanese, ceramic decorative urn with moriage finish, dating to the late 19th century, circa 1900.

- Wonderful, antique Japanese ceramic art
- Displaying a desirable aged patina - both in good order
- Ceramic free of cracks across both vases
- Finished with bright primary colours against a dark ground
- Charming Oriental panel scenes decorate the front and reverse
- Colourful in raised enamel, glazed slipware or 'moriage'
- Flared, crimped rim and body decorated with foliate and circular motif
- Adorned with elaborate pierced handles to either side of the neck
- Each urn raised on trumpeted stands with triangle pattern in alternating colours

This is a delightful pair of antique satsuma vases. This profusely decorated pair of urns depict charming oriental scenes framed with foliage and floral detail, interspersed with stylised bead work. Delivered polished and ready to enhance any room.

Search [London Fine for #18.7061](#) , or scan the QR code for more photos and details

**DIMENSIONS**

- First Vase Width: 19.5cm (7.75")
- First Vase Depth: 17.5cm (7")
- First Vase Height: 46cm (18")
- Second Vase Width: 19.5cm (7.75")
- Second Vase Depth: 17.5cm (7")
- Second Vase Height: 45.5cm (18")

