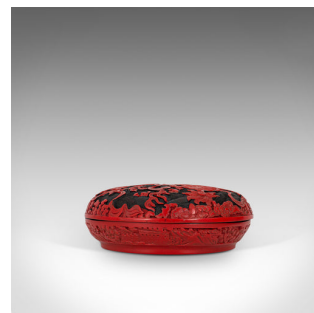
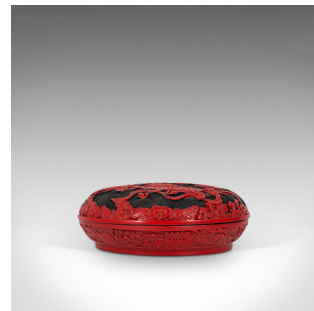


Antique Circular Box, Chinese, Cinnabar, Decorative Tray, Qing Dynasty, C.1900



DESCRIPTION

Our Stock # 18.7138

This is an antique circular box. A Chinese, carved cinnabar lacquer decorative lidded tray, dating to the late Qing dynasty, circa 1900.

- Superb example of the Chinese decorative arts
- Displays a desirable aged patina - in very good order
- Profusely carved with high quality, ancient Chinese mythological scenes
- The vibrant crimson of cinnabar contrasts against the black ground
- Dome top carved with a pair of Dog of Fu facing each other
- Decorative motif with flowing silk sashes billow across the scene
- Carved wave pattern to the background in very fine detail
- Decorated border to the circumference of the base with a 4 character mark to the underside

This is a detailed, hand carved and highly appealing antique circular box with superb cinnabar crimson hues. Delivered polished and ready to impress.

Search [London Fine for #18.7138](#) , or scan the QR code for more photos and details

DIMENSIONS

Max Width: 17cm (6.75")

Max Depth: 17cm (6.75")

Max Height: 6cm (2.25")

