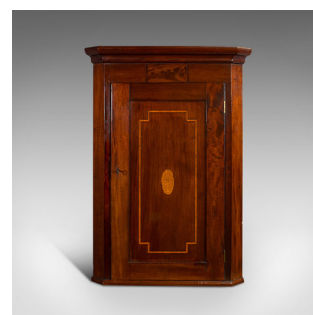


## Antique Corner Cabinet, English, Mahogany, Walnut, Inlay, Georgian, Circa 1800



### DESCRIPTION

Our Stock # 18.7070

This is an antique corner cabinet. An English, mahogany and walnut cabinet with quality inlay and detail, dating to the Georgian period, circa 1800.

- The superior finish exudes collectible appeal
- Displaying a desirable aged patina
- Select mahogany shows fine grain interest
- Glorious russet hues beam beneath the wax polish finish
  - Tiered crown moulding standing above the whole, over a flame mahogany inset panel
- Field panel door further distinguished with a walnut inlay border, offering a lighter contrasting tone
  - Exquisite oval inlaid medallion with boxwood - the planted urn being of wonderful detail
- Inset, working brass-lined lock secures the door – key present
- Interior arranged as a trio of shelves with a deep crimson, natural mahogany finish
- Standing upon a canted plinth of shallow profile
- Suitable for wall mounting with a pair of brass loops to the rear

### DIMENSIONS

Max Width: 71.5cm (28.25")

Max Depth: 39.5cm (15.5")

Max Height: 101cm (39.75")

### LIST PRICE

£925.00



Search [London Fine](#) for #18.7070, or scan the QR code for more photos and details

+44 (0) 207 1833 511

London Fine Ltd  
The Antique Village  
The Old Whiteways Cider Factory  
Hele, Devon, EX5 4PW

sales@londonfine.co.uk  
E. & O. E.