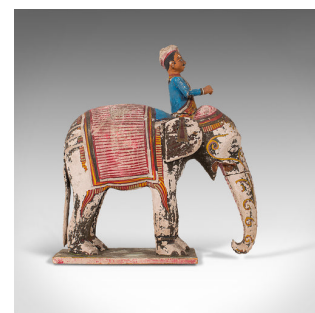
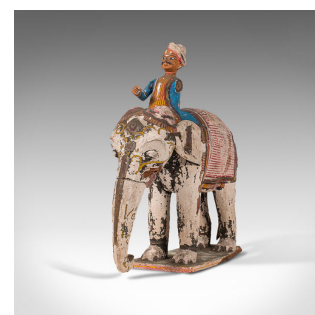
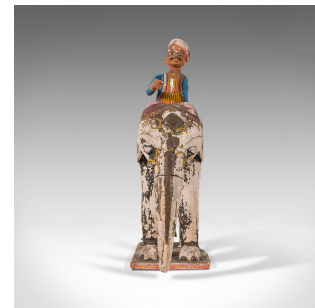


Antique Decorative Elephant and Mahout, Indian, Figure, Early Victorian, C.1850



DESCRIPTION

Our Stock # 18.7133

This is an antique decorative elephant and mahout. An Indian, hand-painted wooden figure, dating to the early Victorian period - mid 19th century.

- A joyful, appealing elephant for lovers of all things cheerful
 - Displays a desirable aged patina - the obvious losses not detracting from the inherent charm
- Hand-painted wood blesses the mahout figure with a colourful visage
- The shock of blue to the rider's coat a fine contrast to the lighter hues
- Dainty, but ready to overcome this and brighten your home
- Aged repaired breaks to both trunk , tail & rider - mahout missing an arm, part of base loss as per images

This is a super antique decorative elephant and rider, with great colours and a loveable patina that is testament to many decades of inquisitive handling and an obvious compulsion to take it in the hand and enjoy it. Delivered ready to delight all those who encounter it.

Search [London Fine for #18.7133](#) , or scan the QR code for more photos and details

DIMENSIONS

Max Width: 9.5cm (3.75")
Max Depth: 26cm (10.25")
Max Height: 28cm (11")

LIST PRICE

£895.00

