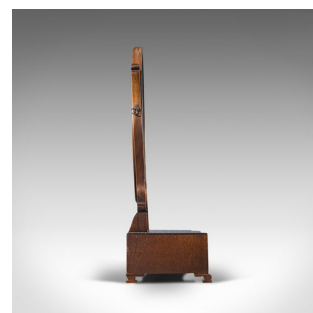


Vintage Toilet Mirror, English, Mahogany, Pedestal, Late 20th Georgian Revival



DESCRIPTION

Our Stock # 18.7155

This is a vintage toilet mirror. An English, mahogany and glass mirror on pedestal in late 20th Georgian revival taste, circa 1970.

- Beautifully appointed mirror with classical appeal
- Displaying a desirable aged patina
- Mahogany shows fine grain interest and deep caramel hues
- Mirror plate with very light foxing and superb clarity
- Slender frame supported by a pair of serpentine upstands
- Uniting the upper and base by way of a pair of splayed hoof feet
- Arranged as a trio of drawers within a bow front apron
 - Each of the three drawers dressed with small drop handles and finished with cockbeading
- The bright mirror offers a strikingly clear reflection
- Lighter caramel finish to the rear of the frame
- Small supplying dealer's label to the rear for Hindhead Furnishings of Surrey

Search [London Fine for #18.7155](#) , or scan the QR code for more photos and details

DIMENSIONS

Max Width: 51.5cm (20.25")
 Max Depth: 20.5cm (8")
 Max Height: 65cm (25.5")
 Mirror Plate Width: 32cm (12.5")
 Mirror Plate Height: 42cm (16.5")

LIST PRICE

£495.00

