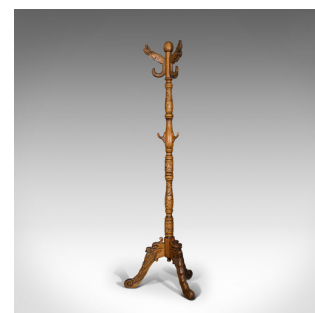
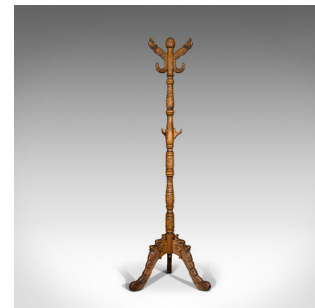


Vintage Coat Stand, Oriental, Carved Beech, Hallway, Hat, Art Deco, Circa 1950



DESCRIPTION

Our Stock # 18.7100

This is a vintage coat stand. An Oriental, carved beech hallway rack, dating to the late Art Deco period, circa 1950.

- Prominent example of Oriental Art Deco taste
- Displaying a desirable aged patina
- Beech offers fine grain interest and mellow caramel hues
- Copiously carved, with highlights projecting from the wax polish finish
- Topped with a broad ovoid finial providing a centrepiece to the trio of hooks
- Striking arms wonderfully presented as Dragonfish with superb scale patterns
- Main baluster upstand decorated with bountiful cloud form motif
- Three hooks at the mid-point prove ideal for placing hats
- Raised upon a tri-form of legs over a drop pendant finial to centre
- Impressive knees formed by large dragon heads, from which the cabriole legs splay outwards
- Decorated with cascading wave designs, the legs offer a fascinating spectacle

Search [London Fine for #18.7100](#) , or scan the QR code for more photos and details

DIMENSIONS

Max Width: 58.5cm (23")

Max Depth: 54cm (21.25")

Max Height: 181cm (71.25")

