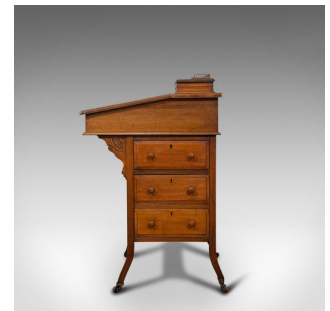


Antique Davenport, English, Walnut, Bird's Eye Maple, Writing Desk, Victorian



DESCRIPTION

Our Stock # 18.7141

This is an antique Davenport. An English, walnut and bird's eye maple writing desk, dating to the Victorian period, circa 1880.

- Dashing Victorian Davenport with quality figuring
- Displays a desirable aged patina - very good order throughout
- Inviting walnut offers fine grain interest and rich caramel hues
- Desk interior presents radiant bird's eye maple with its golden tones
- The comfortable writing slope with inset, tooled leather skiver
- Opens smoothly to reveal a pair of drawers with small wooden pulls
- Dressed with a small circular lock escutcheon to the front fascia — key absent
- Upper arcaded with gilt metal and opening to reveal a set of pen trays
- A suite of three drawers to the right hand side, with faux fronts opposite
- Wonderfully shaped bracket supports with carved quarter-foil motif
- Standing upon four slender, gently splayed legs

Search [London Fine for #18.7141](#) , or scan the QR code for more photos and details

DIMENSIONS

Max Width: 58cm (22.75")

Max Depth: 56cm (22")

Max Height: 90cm (35.5")

Skiver Width: 46cm (18")

Skiver Height: 26.5cm (10.5")

