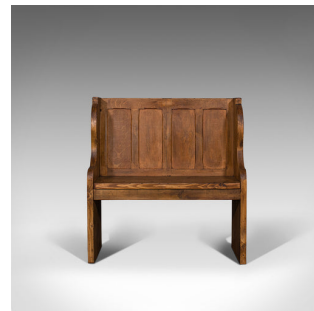


Antique Two Seat Settle, English, Oak, Pine, Ecclesiastic, Pew, Bench, Victorian



DESCRIPTION

Our Stock # 18.7122

This is an antique two-seater settle. An English, oak and pine ecclesiastical pew or bench, dating to the late Victorian period, circa 1900.

- Mellow tones and attractive form
- Displays a desirable aged patina
- Select oak and pine offers fine grain interest
- Light caramel tones with wisps of medullary rays to the oak stocks
- Four-panel back framed by deep, shaped wings
- Stout bench at a comfortable height of 47.5cm (18.75")
- Raised upon a pair of stile feet

This is an appealing antique settle, with great colouration and grain interest. Solid joints and construction, delivered waxed, polished and ready to enjoy.

Search [London Fine for #18.7122](#) , or scan the QR code for more photos and details

DIMENSIONS

Max Width: 89.5cm (35.25")
Max Depth: 41.5cm (16.25")
Max Height: 94.5cm (37.25")
Seat Width: 82cm (32.25")
Seat Depth: 34cm (13.5")
Seat Height: 47.5cm (18.75")

