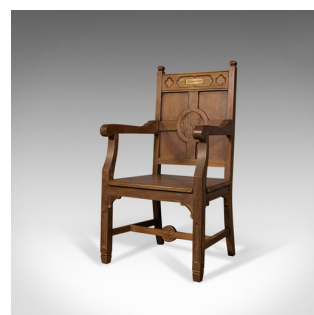
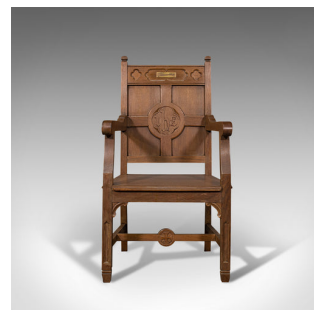


Antique Elbow Chair, Oak, Hall, Carver Armchair, Ecclesiastical Taste, Edwardian



DESCRIPTION

Our Stock # 18.7194

This is an antique elbow chair. An English, oak, hall carver armchair displaying ecclesiastical taste, dating to the Edwardian period, circa 1910.

- Strong, square cut proportions
- Displaying a desirable aged patina
- Select oak shows fine grain interest and wisps of medullary rays
- Mellow caramel hues beam beneath the wax polish finish
- Stout back rest with quadrant panels uniting within a carved roundel
- The top rail with relief carvings between two prominent, squat finials
- Unmarked brass plaque to the rail suitable for personal engraving
- Central roundel bear the carved initials of LHS
- Flat slender arms terminate with scrolled knuckles
- Comfortable seat height of 43.5cm (17.25")
- Stood upon decorated square section legs to the front with short spade feet

Search [London Fine for #18.7194](#) , or scan the QR code for more photos and details

DIMENSIONS

Max Width: 56.5cm (22.25")
Max Depth: 53cm (20.75")
Max Height: 106cm (41.75")
Seat Width: 46.5cm (18.25")
Seat Depth: 43cm (17")
Seat Height: 43.5cm (17.25")

LIST PRICE

£895.00

