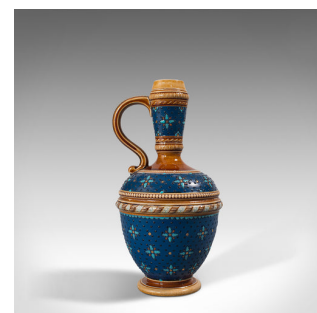
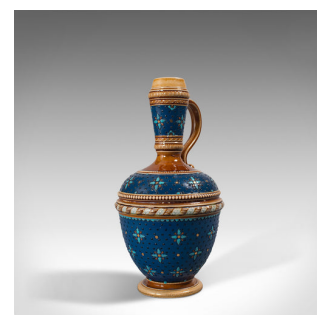
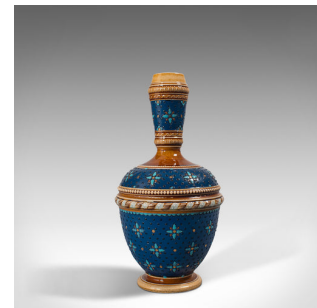


Antique Decorative Ewer, German, Ceramic, Serving Flask, Liqueur Bottle, C.1900



DESCRIPTION

Our Stock # 18.7051

This is an antique decorative ewer. A German, ceramic serving flask or liqueur bottle by Villeroy & Boch of Mettlach, dating to the late Victorian period, circa 1900.

- Strikingly decorative ewer for the discerning collector
- Displaying a desirable aged patina
- Dappled stoneware of superior finish and order with naturally finished blue ground
- Pleasingly warm palette of amber-brown hues provide contrasting visual appeal
- Tall tapering neck with concentric bands of the main foliate pattern and secondary borders
- The elegantly serpentine handle meets the upper body with a scrolled end flourish
- Wonderfully globular body in a dashing blue finish, decorated with black moriage
- Eye-catching light blue and pink flower heads forming a delightful pattern
- Rope-link band to the centreline with smaller secondary beaded edge above
- Raised upon a squat tapering base with brown and cream painted finish
- Maker's mark to the base reads 'Mettlach, VB - 1328' with 96 imprint to the side

Search [London Fine for #18.7051](#) , or scan the QR code for more photos and details

DIMENSIONS

- Max Width: 11cm (4.25")
- Max Depth: 10.5cm (4.25")
- Max Height: 21.5cm (8.5")

