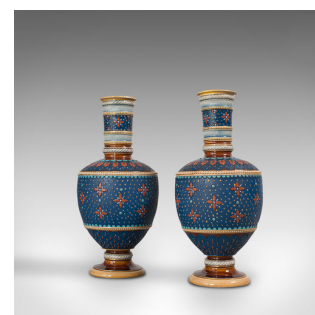


Pair of Antique Decorative Vases, German, Ceramic, Villeroy & Boch, Victorian



DESCRIPTION

Our Stock # 18.7052

This is a pair of antique decorative vases. A German, ceramic flower vase by Villeroy & Boch of Mettlach, dating to the late Victorian period, circa 1900.

- An alluring pair of decorative vases
- Displaying a desirable aged patina - in very good original order
- Naturally finished stoneware of superior quality with a rich, royal blue ground
- Secondary palette of warm hues complement the whole
- The tall neck arranged in bands of fine detail with a reprise of the main decor
- Tapered upper body displays small red leaves and demi-lune petal motif
- Gilt moriage bedazzles against the deep blue ground
- Charming light blue and pink flower heads forming a delightful pattern
- Delineated by distinctive bands of cream coloured beading
- Raised upon a turned base with brown and cream painted finish
 - 'Abbey' Maker's mark to the base reads 'Mettlach, VB, Geschutzt - 1808' with 99

imprint to the side

Search [London Fine for #18.7052](#) , or scan the QR code for more photos and details

DIMENSIONS

Max Width: 11.5cm (4.5")

Max Depth: 11.5cm (4.5")

Max Height: 25cm (9.75")

