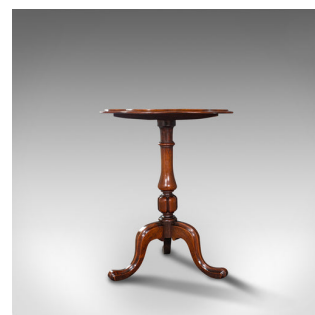
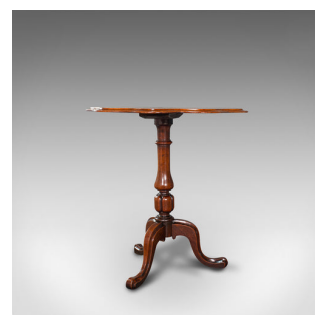
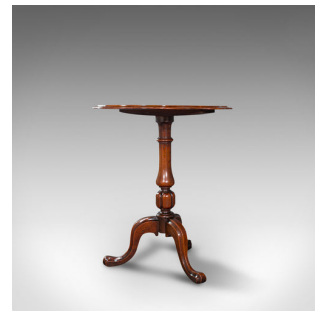


## Antique Wine Table, Mahogany, Burr Walnut, Inlay, Side, Marquetry, Regency, 1820



### DESCRIPTION

Our Stock # 18.7208

This is a superb antique wine table. An English, mahogany and burr walnut inlaid side table exuding superb marquetry, dating to the Regency period, circa 1820.

- Dashing wine table with fine figuring and superior craftsmanship
- Displays a desirable aged patina
- Mahogany offers fine grain interest and rich russet hues beneath a wax polish finish
- Generous stocks of burr walnut inlaid to the top a sight to behold
- Distinctive petal shaped top with serpentine, fascinating form
- Tapered edge with raised tier frames the quality marquetry centrepiece
- Captivating burr and mellow caramel hues to the octagonal arrangement
- Eight pointed star to the centre with bookmatched quadrants and boxwood border
- Supported by a tall baluster column with broad carved bulb
- Standing upon a tri-form base in select mahogany stocks
- Squat cabriole legs with raised central band, terminating in gently rolled toes

Search [London Fine for #18.7208](#) , or scan the QR code for more photos and details

### DIMENSIONS

Max Width: 57cm (22.5")

Max Depth: 68cm (26.75")

Max Height: 70cm (27.5")

