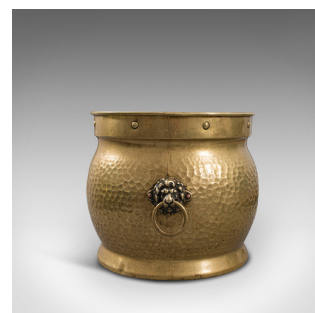


Antique Coal Box, English, Brass, Fireside, Log Bin, Fire, Victorian, Circa 1900

**DESCRIPTION**

Our Stock # 18.7134

This is an antique coal box. An English, brass fireside log bin, dating to the late Victorian period, circa 1900.

- Classic antique fireside appeal
- Displays a desirable aged patina
- Polished brass radiates warm golden tones
- Hand-beaten, hammered finish with fascinating mottled pattern
- Pronounced rim with rolled edge over shallow neck with bonded studs
- Globular body offering a generous internal diameter of 30cm (11.75")
- Delightful lion's masque drop handles with prominent, detailed head
- Raised upon a cylindrical tapered stand with flat base showing desirable patination

This is a dashing antique coal box, with wonderful hand-beaten finish. Suitable for coal, logs or other fuel types. Delivered polished and ready for the fireplace.

Search [London Fine for #18.7134](#), or scan the QR code for more photos and details

DIMENSIONS

Max Width: 34cm (13.5")

Max Depth: 31cm (12.25")

Max Height: 26.5cm (10.5")

