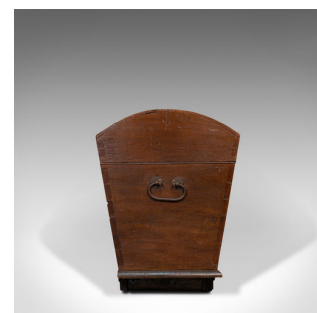




## Large Antique Shipping Chest, English, Oak, Carriage Trunk, Georgian, Circa 1800



### DESCRIPTION

Our Stock # 18.7191

This is a large antique shipping chest. An English, oak carriage trunk, dating to the late 18th century Georgian period, circa 1800.

- Beautiful dome-top chest with superb finish
- Displaying a desirable aged patina
- Select oak offers fine grain interest and bountiful medullary rays
- Rich caramel and russet hues invite the viewer beneath a wax polish finish
- Striking sarcophagus form adds distinction
- Stout dome lid opens smoothly upon external iron strap hinges
- Three plank top with steam bent curvature and appealing figuring
- Dressed with a pair of small circular handles to the front
- Small oval lock escutcheon to front with large antique lock within – key absent
- Large, pleasingly weathered iron drop handles to each side
- Attractive show dovetails to corners a testament to the strong form

Search [London Fine for #18.7191](#) , or scan the QR code for more photos and details

### DIMENSIONS

Max Width: 128cm (50.5")

Max Depth: 59cm (23.25")

Max Height: 82cm (32.25")

### LIST PRICE

£2,350.00

